


OWNER/CLIENT



ENGINEER/ARCHITECT



PROJECT ENGINEERING CONSULTANTS
 986 WEST 9000 SOUTH
 WEST JORDAN, UTAH, 84088
 OFFICE: 801-495-4240
 INFO@PEC.US.COM

PROJECT INFORMATION

OLSEN FARMS
 CENTER STREET W & EMERALD DRIVE
 KIMBERLY, IDAHO 83341

SEAL/STAMP OF APPROVAL

PRELIMINARY PLANS NOT FOR CONSTRUCTION

ISSUE DATE

12/16/2021

NO.	REVISION	DATE
1	xxx	xx-xx-xxxx
2	xxx	xx-xx-xxxx
3	xxx	xx-xx-xxxx
4	xxx	xx-xx-xxxx
5	xxx	xx-xx-xxxx
6	xxx	xx-xx-xxxx
7	xxx	xx-xx-xxxx
8	xxx	xx-xx-xxxx
9	xxx	xx-xx-xxxx
10	xxx	xx-xx-xxxx

PLAN INFORMATION

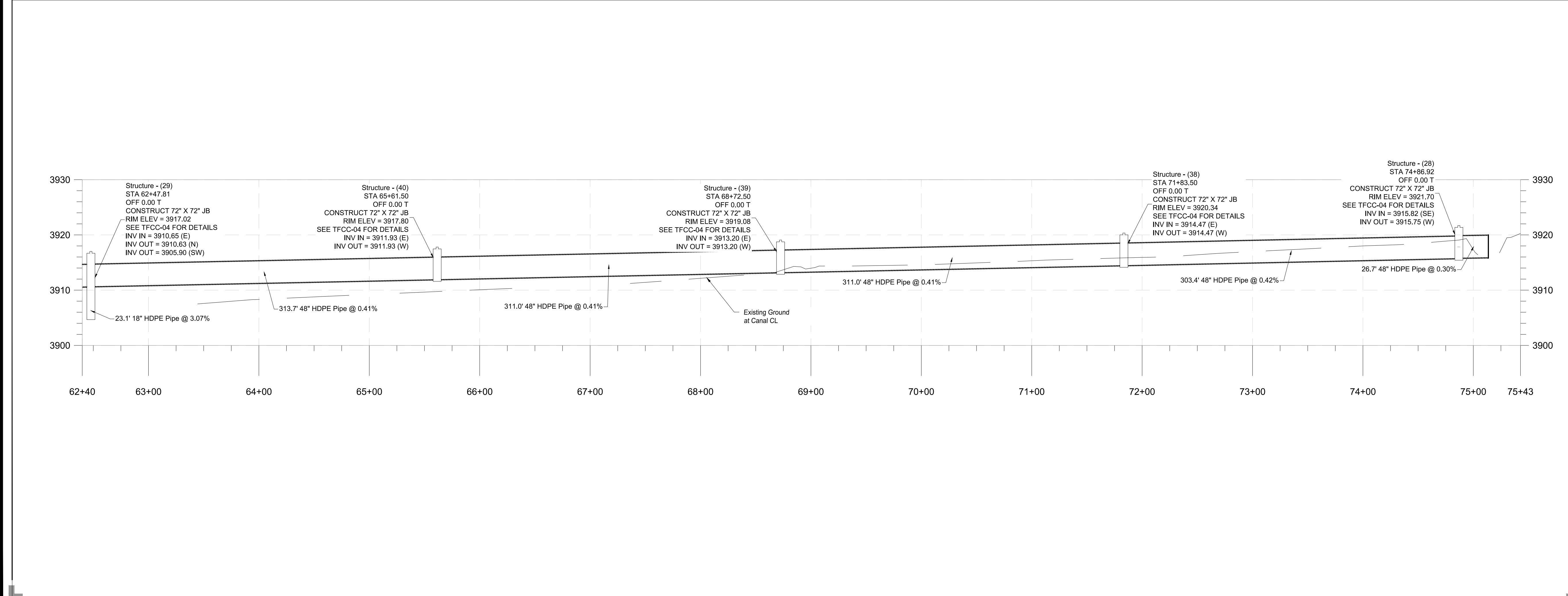
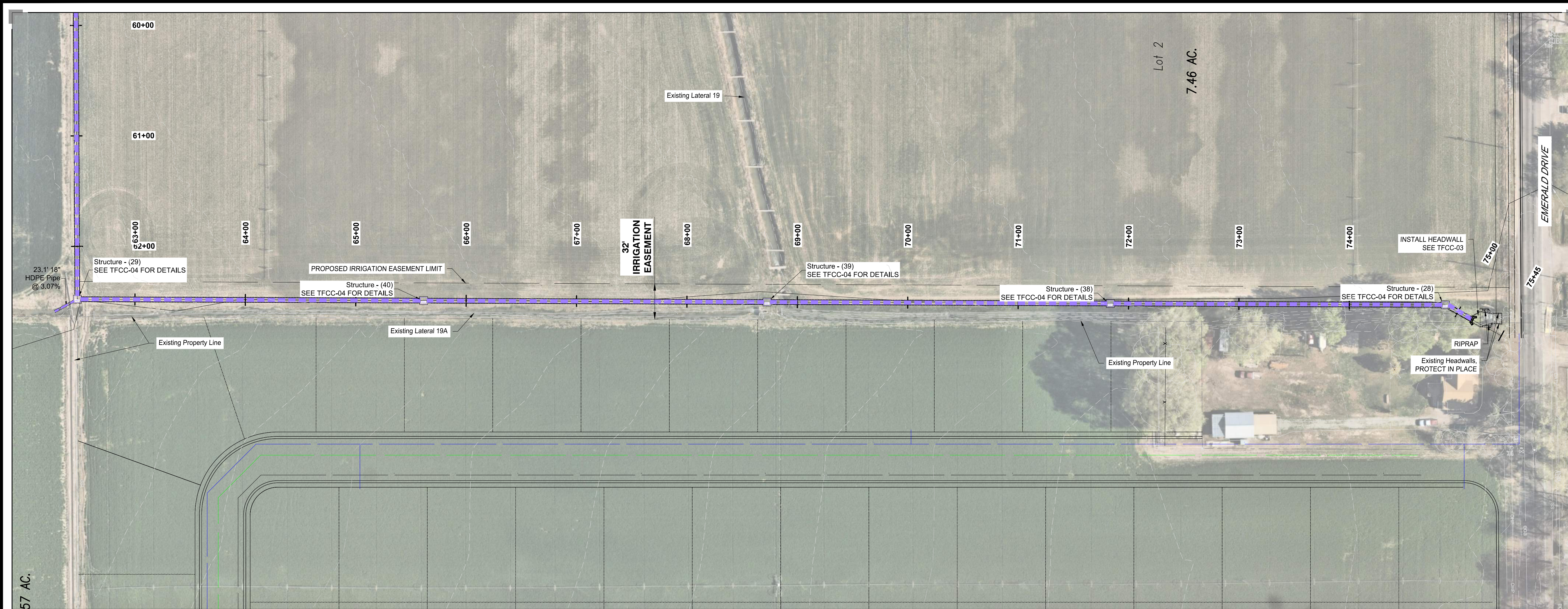


SHEET NAME

TWIN FALLS CANAL COMPANY IRRIGATION PIPES

SHEET NUMBER

TFCC-01



OWNER/CLIENT

3 EMERALDS

ENGINEER/ARCHITECT

PEEC

PROJECT ENGINEERING CONSULTANTS
 986 WEST 9000 SOUTH
 WEST JORDAN, UTAH, 84088
 OFFICE: 801-495-4240
 INFO@PEC.US.COM

PROJECT INFORMATION

OLSEN FARMS
 CENTER STREET W & EMERALD DRIVE
 KIMBERLY, IDAHO 83341

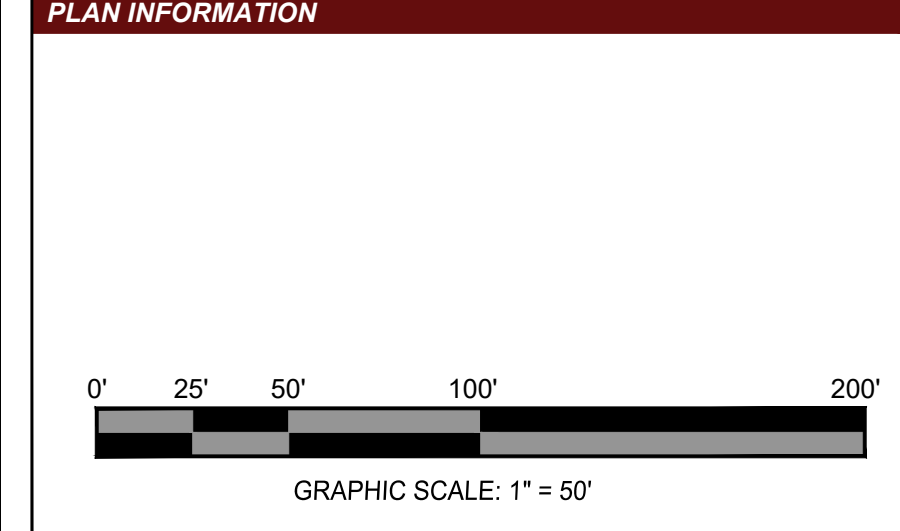
SEAL/STAMP OF APPROVAL

PRELIMINARY PLANS NOT FOR CONSTRUCTION

ISSUE DATE

12/16/2021

NO.	REVISION	DATE
1	xxx	xx-xx-xxxx
2	xxx	xx-xx-xxxx
3	xxx	xx-xx-xxxx
4	xxx	xx-xx-xxxx
5	xxx	xx-xx-xxxx
6	xxx	xx-xx-xxxx
7	xxx	xx-xx-xxxx
8	xxx	xx-xx-xxxx
9	xxx	xx-xx-xxxx
10	xxx	xx-xx-xxxx

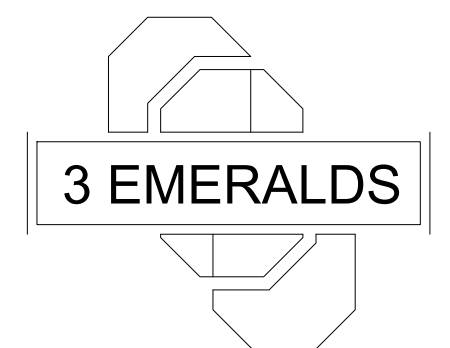


SHEET NAME

**TWIN FALLS CANAL COMPANY
IRRIGATION PIPES**

SHEET NUMBER

TFCC-02



PROJECT ENGINEERING CONSULTANTS
 986 WEST 9000 SOUTH
 WEST JORDAN, UTAH, 84088
 OFFICE: 801-495-4240
 INFO@PEC.US.COM

OLSEN FARMS
 CENTER STREET W & EMERALD DRIVE
 KIMBERLY, IDAHO 83341

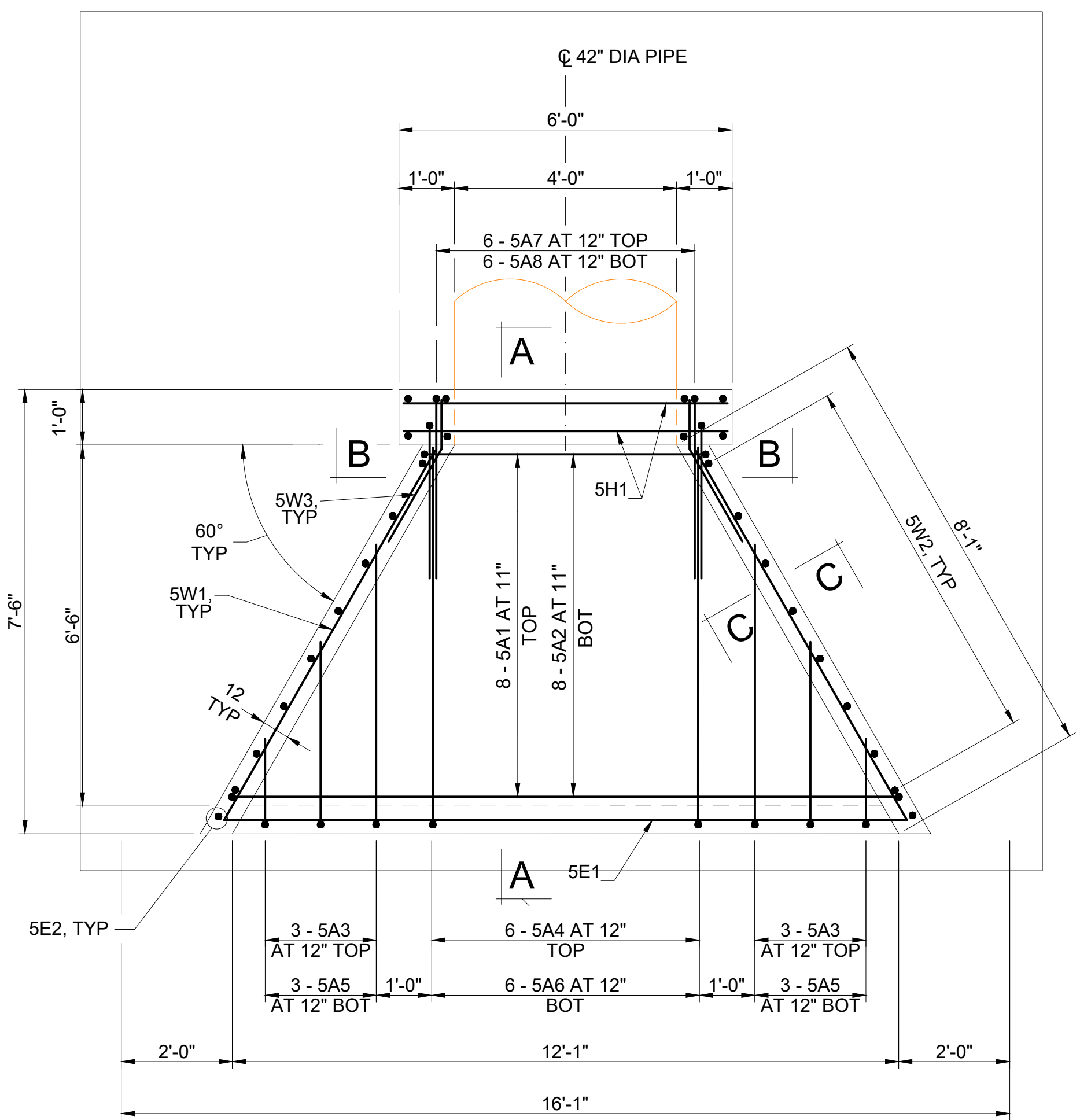
PRELIMINARY PLANS NOT FOR CONSTRUCTION

12/16/2021

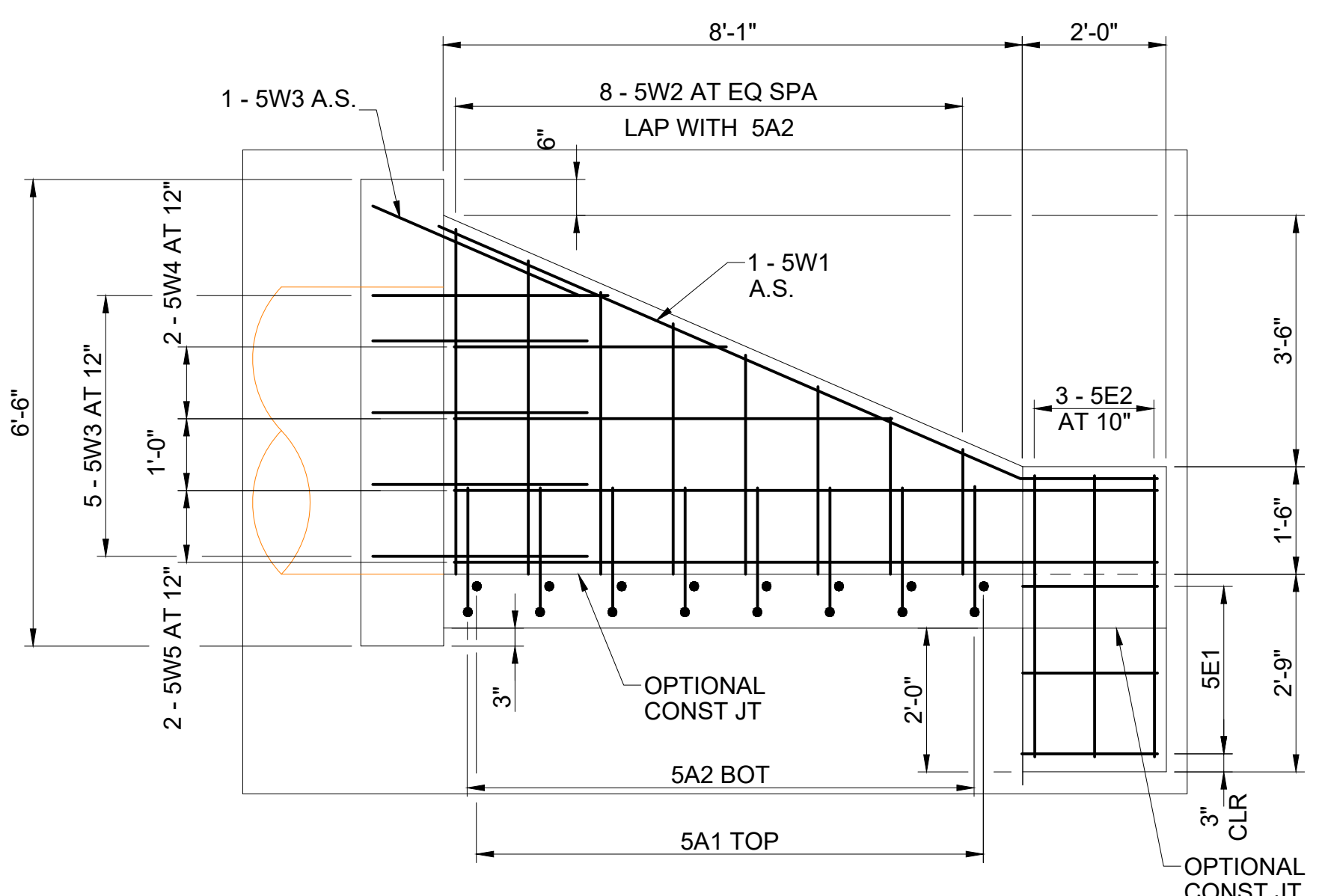
NO.	REVISION	DATE
1	xxx	xx-xx-xxxx
2	xxx	xx-xx-xxxx
3	xxx	xx-xx-xxxx
4	xxx	xx-xx-xxxx
5	xxx	xx-xx-xxxx
6	xxx	xx-xx-xxxx
7	xxx	xx-xx-xxxx
8	xxx	xx-xx-xxxx
9	xxx	xx-xx-xxxx
10	xxx	xx-xx-xxxx

TWIN FALLS CANAL COMPANY
 IRRIGATION PIPES

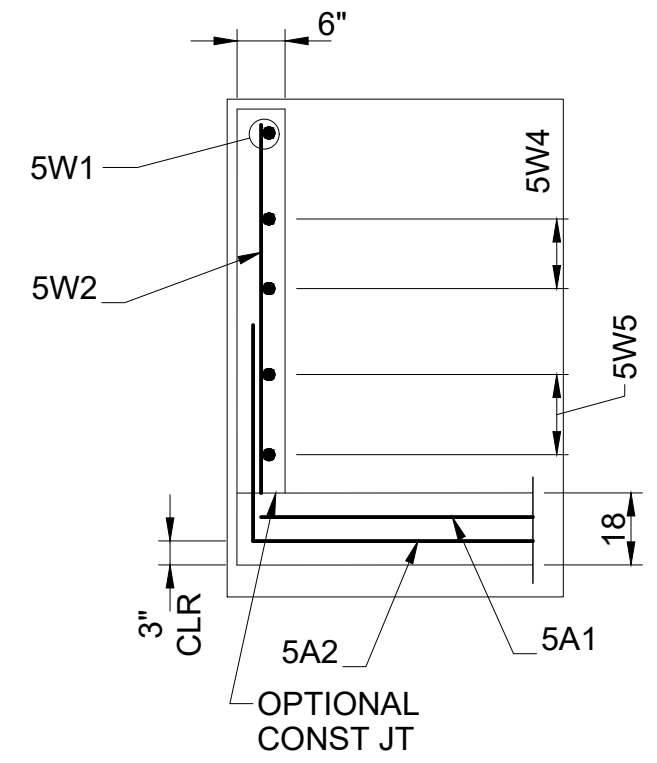
TFCC-03



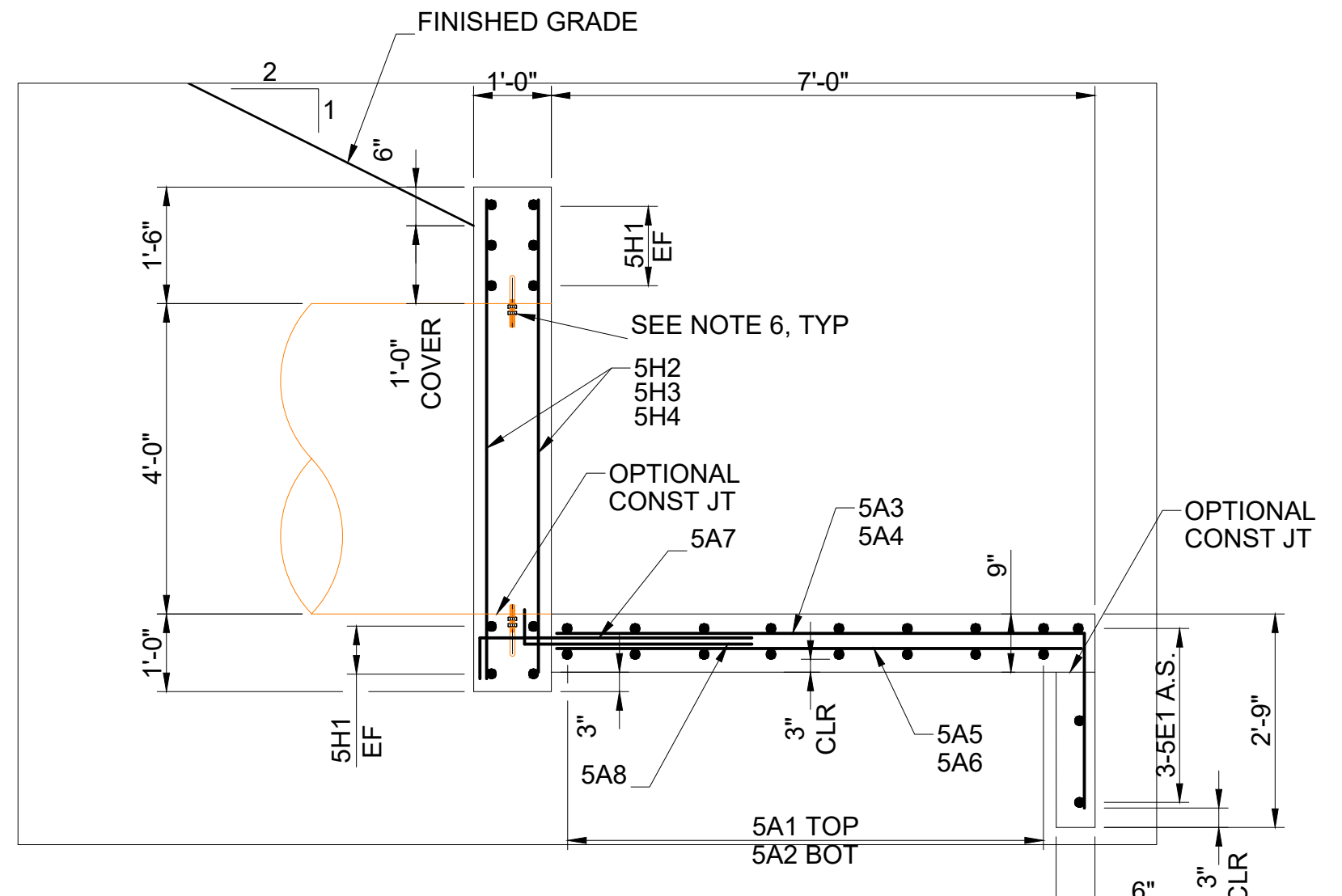
PLAN



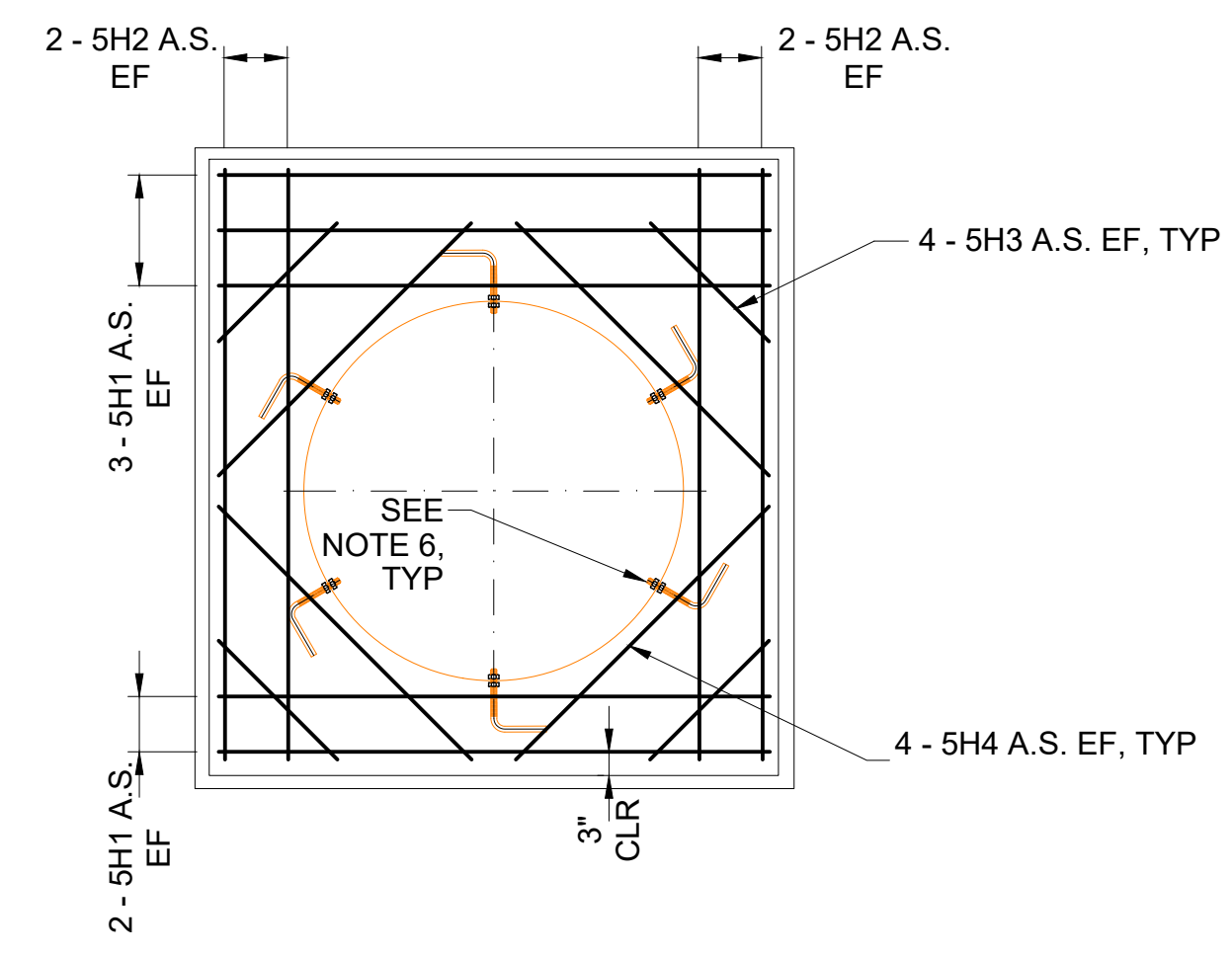
DEVELOPED WINGWALL ELEVATION
 HEADWALL REINFORCING STEEL NOT SHOWN FOR CLARITY



SECTION C-C



SECTION A-A



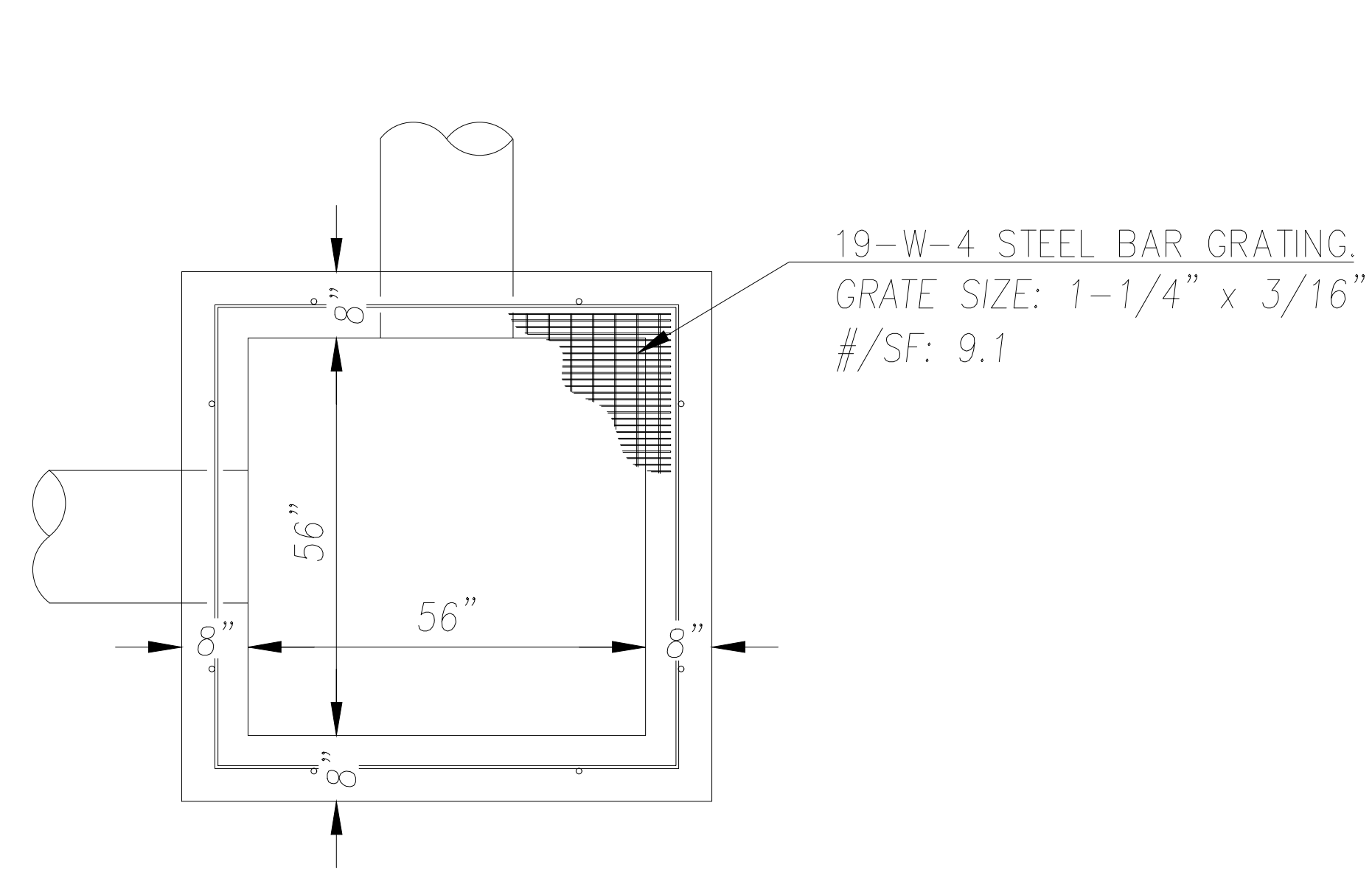
SECTION B-B

GENERAL NOTES

1. USE COATED DEFORMED-CARBON REINFORCING STEEL BARS CONFORMING TO ASTM A 775 OR AASHTO M 111 AND M 31 GRADE 60, RESPECTIVELY.
2. CHAMFER ALL EXPOSED CONCRETE CORNERS 3/4 INCH EXCEPT WHERE NOTED OTHERWISE.
3. PROVIDE 2 INCH CONCRETE COVER TO REINFORCING STEEL EXCEPT WHERE NOTED OTHERWISE.
4. USE CLASS AA(AE) CAST-IN-PLACE CONCRETE EXCEPT WHERE SPECIFIED OTHERWISE.
5. FORM HEADWALL NUMBER IN 6 INCH BLOCK LETTERS AT THE TOP CENTER AND FRONT FACE OF HEADWALL. SEE "TFCC-XX" FOR DETAILS.
6. PROVIDE SIX STANDARD 3/4 INCH DIA x 8 INCH BOLTS AS SHOWN. SPACE EQUALLY AROUND 42 INCH DIA PIPE.
7. REINFORCING STEEL AND CONCRETE QUANTITIES ARE FOR INFORMATION ONLY AND ARE FOR ONE HEADWALL.

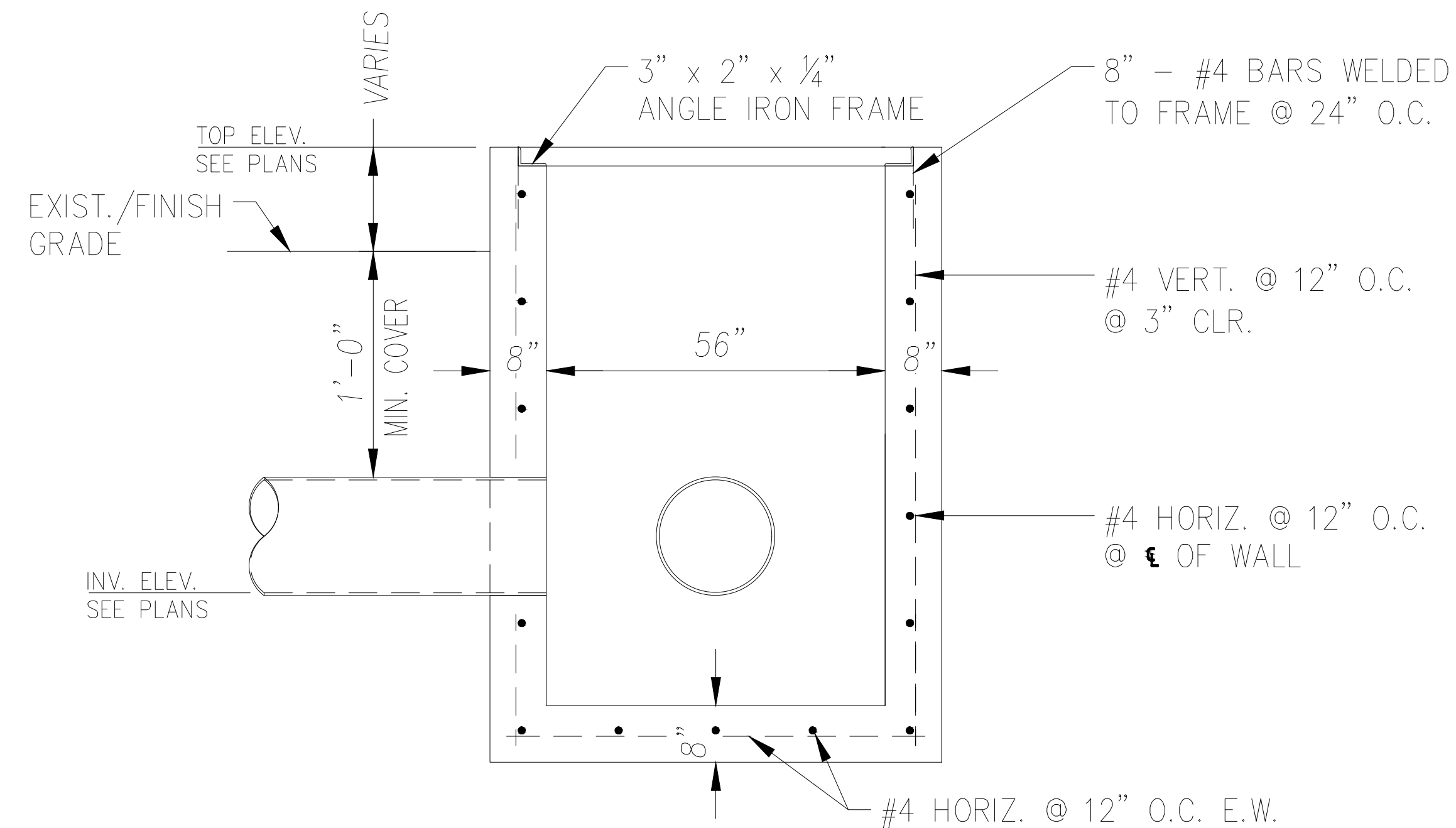
DESIGN DATA

CURRENT AASHTO LRFD BRIDGE DESIGN SPECIFICATIONS AND INTERIM SPECIFICATIONS.
 CAST-IN-PLACE CONCRETE: $f_c = 4,000$ PSI; f_y (REINF) = 60,000 PSI; CLASS AA (AE) $n = 8$



PLAN
N.T.S.

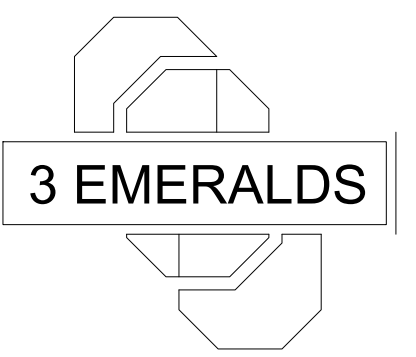
72" X 72" JUNCTION BOX



SECTION
N.T.S.

N.T.S.

OWNER/CLIENT



ENGINEER/ARCHITECT



PROJECT ENGINEERING CONSULTANTS
986 WEST 9000 SOUTH
WEST JORDAN, UTAH, 84088
OFFICE: 801-495-4240
INFO@PEC.US.COM

PROJECT INFORMATION

OLSEN FARMS
CENTER STREET W & EMERALD DRIVE
KIMBERLY, IDAHO 83341

SEAL/STAMP OF APPROVAL

PRELIMINARY PLANS NOT
FOR CONSTRUCTION

ISSUE DATE

12/16/2021

NO.	REVISION	DATE
1	xxx	xx-xx-xxxx
2	xxx	xx-xx-xxxx
3	xxx	xx-xx-xxxx
4	xxx	xx-xx-xxxx
5	xxx	xx-xx-xxxx
6	xxx	xx-xx-xxxx
7	xxx	xx-xx-xxxx
8	xxx	xx-xx-xxxx
9	xxx	xx-xx-xxxx
10	xxx	xx-xx-xxxx

PLAN INFORMATION

SHEET NAME

TWIN FALLS CANAL COMPANY
IRRIGATION PIPES

SHEET NUMBER

TFCC-04