

**REMINDER**

**PLEASE KEEP YOUR  
STUDENTS  
ACCOUNT  
CURRENT..  
PREPAY  
STUDENT  
ACCOUNTS  
send payment to  
school  
OR  
PAY ON LINE**

KIMBERLY & STRICKER ELEMENTARY  
KIMBERLY MIDDLE SCHOOL & RISE CHARTER SCHOOL

## BULLDOG LUNCH BOX

# January 2025

**GRADES 6TH -11TH**

2ND CHOICE: CHANGES EVERY 2 WEEKS

MONDAY: CORN DOG OR BREAKFAST ON A STICK

TUESDAY: HOAGIE SANDWICH OR WRAP

WEDNESDAY: CHICKEN FINGERS BASKET OR WINGS & RINGS

THURSDAY: FINGERSTEAKS BASKET OR BAKED POTATO w/PRETZEL

FRIDAY: HAMBURGER BAR

MON	TUE	WED	THU	FRI
		1 New Year's Day 	2 	3 
Go to: <a href="http://www.mymealtime.com">www.mymealtime.com</a>				
6 CHEESEBURGER WAFFLE FRIES LETTUCE, TOM, PICKLE	7 TACO TATER FIESTA BEANS CINNAMON TWIST	8 SOUP BAR TWIN BERRY & CREAM	9 TEMPURA CHICKEN STEAMED RICE BROCCOLI FORTUNE COOKIE	10 PIZZA COOKIE BIG GREEN SALAD
13 HAMBURGER WAFFLE FRIES LETTUCE/TOM PICKLE	14 BEAN & CHEESE BURRITO SEASONED PINTO BEANS	15 PASTA BAR GARLIC BREADSTICK GREEN BEANS	16 PIGS IN A BLANKET BAKED TOTS	17 MOZZ STICKS MARINARA BIG GREEN SALAD
20 	21 WALKING TACO CORN	22 CHICKEN DRUMSTICK POTATOES & GRAVY GREEN BEANS	23 MINI CORN DOG MAC & CHEESE PEAS & CARROTS	24 PIZZA COOKIE BIG GREEN SALAD
27 CHEESEBURGER BAKED FRIES LETTUCE/TOM PICKLE	28 CHICKEN & CHEESE QUESADILLA FIESTA BEANS	29 BONELESS WINGS 1/2 BAKED POTATO MIXED VEGGIES	30 CRISPY CHICKEN SAND LETTUCE/TOM WAFFLE FRIES	31 PIZZA COOKIE BIG GREEN SALAD



**MEAL PRICES**  
B-REDUCED \$.30  
L- REDUCED \$.40  
B-K-5 PAID \$2.25  
L-K-5 PAID \$3.35  
B- 6-12 PAID \$2.75  
L-6-12 PAID \$3.75  
B-ADULTS \$4.00  
L-Adult \$5.50  
EXTRA MILK \$.75

**EACH MEAL FEATURES A VARIETY OF FRUITS AND VEGETABLES TO COMPLEMENT EVERY MEAL.**

**ENJOY DAILY OFFERINGS OF REDUCED FAT AND LOWFAT MILK FOR A NUTRITIOUS AND DELICIOUS DINING EXPERIENCE.**

**THIS INSTITUTION IS AN EQUAL OPPORTUNITY PROVIDER MENU SUBJECT TO CHANGE**





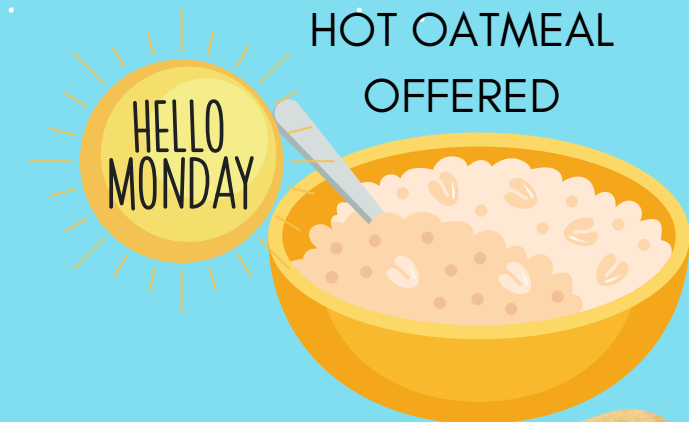
KIMBERLY & STRICKER ELEMENTARY  
KIMBERLY MIDDLE SCHOOL & RISE CHARTER SCHOOL

## BULLDOG LUNCH BOX

# January 2025

MON TUE WED THU FRI

		1 <i>New Year's Day</i>	2	3
				
Go to: <a href="http://www.mymealtime.com">www.mymealtime.com</a>				
6 ASSORTED CEREAL YOGURT CUP	7 SCRAMBLE EGGS BOWL BREAKFAST BAR	8 DONUT BAR FRUIT SMOOTHIE	9 MUFFIN CHEESE STICK	10 BREAKFAST SAND
13 ASSORTED CEREAL YOGURT CUP	14 BREAKFAST QUESADILLA SALSA	15 DUTCH WAFFLE	16 YOGURT PARFAIT GRANOLA	17 BREAKFAST SAND
20 	21 BREAKFAST BURRITO SALSA	22 MINI WAFFLE FRUIT SMOOTHIE	23 MUFFIN CHEESE STICK	24 BREAKFAST SAND
27 ASSORTED CEREAL YOGURT CUP	28 SCRAMBLED EGGS TOAST SALSA/JELLY	29 PANCAKE ON A STICK SYRUP	30 YOGURT PARFAIT GRANOLA	31 BREAKFAST SAND



HOT OATMEAL  
OFFERED



MEAL PRICES  
B-REDUCED \$.30  
L- REDUCED \$.40  
B-K-5 PAID \$2.25  
L-K-5 PAID \$3.35  
B- 6-12 PAID \$2.75  
L-6-12 PAID \$3.75  
B-ADULTS \$4.00  
L-Adult \$5.50  
EXTRA MILK \$.75

PLEASE KEEP YOUR  
STUDENTS  
ACCOUNT  
CURRENT..

PREPAY  
STUDENT  
ACCOUNTS  
send payment to  
school  
OR  
PAY ON LINE

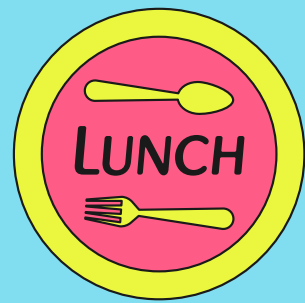


EACH MEAL FEATURES A VARIETY OF FRUITS AND VEGETABLES TO COMPLEMENT EVERY MEAL.

ENJOY DAILY OFFERINGS OF REDUCED FAT AND LOWFAT MILK FOR A NUTRITIOUS AND DELICIOUS DINING EXPERIENCE.

THIS INSTITUTION IS AN EQUAL OPPORTUNITY PROVIDER MENU SUBJECT TO CHANGE





# KIMBERLY HIGH SCHOOL

# BULLDOG GRILL

MON TUE WED THU FRI

		1 New Year's Day	2	3
		NO SCHOOL	NO SCHOOL	NO SCHOOL
6 TURKEY BACON SUB BAKED CHIPS	7 TACO TATER FIESTA BEANS CINNAMON TWIST	8 WINGS POTATO PLANKS SPICY CORNBREAD	9 TERIYAKI CHICKEN STEAMED RICE BROCCOLI FORTUNE COOKIE	10 SPICY CHICKEN SAND BAKED FRIES
13 HAMBURGER BAKED BEANS	14 BEAN, MEAT, CHEESE BURRITO SPANISH RICE	15 SOUP BAR GRILLED CHEESE SAND	16 CHICKEN ALFREDO GARLIC ROLL GREEN BEANS	17 BBQ CHICKEN SAND WAFFLE FRIES
20 NO SCHOOL	21 WALKING TACO CORN	22 BBQ RIBS BAKED POTATO CORNBREAD	23 TEMPURA CHICKEN ORIENTAL NOODLES OR RICE PEAS & CARROTS	24 CHICKEN BURGER SIDEWINDERS
27 WESTERN BURGER BAKED BEANS	28 CHICKEN & CHEESE QUESADILLA FIESTA BEANS	29 SOUP BAR GRILLED CHEESE SAND	30 LASAGNA GARLIC ROLL GREEN BEANS	31 HOT TURKEY MELT SUN CHIPS

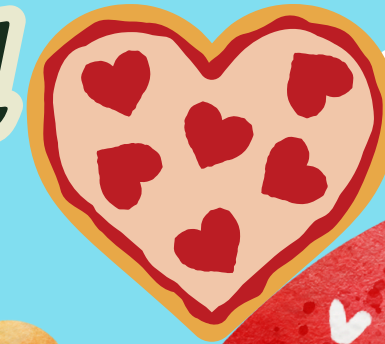
Go to: [www.mymealtime.com](http://www.mymealtime.com)

**PLEASE KEEP YOUR STUDENTS ACCOUNT CURRENT..**  
**PREPAY STUDENT ACCOUNTS**  
**send payment to school OR PAY ON LINE**

# January 2025

2 CHOICES DAILY

## Pizza LINE



MEAL PRICES  
B-REDUCED \$.30  
L- REDUCED \$.40  
B-K-5 PAID \$2.25  
L-K-5 PAID \$3.35  
B- 6-12 PAID \$2.75  
L-6-12 PAID \$3.75  
B-ADULTS \$4.00  
L-Adult \$5.50  
EXTRA MILK \$.75

EACH MEAL FEATURES A VARIETY OF FRUITS AND VEGETABLES TO COMPLEMENT EVERY MEAL.  
ENJOY DAILY OFFERINGS OF REDUCED FAT AND LOWFAT MILK FOR A NUTRITIOUS AND DELICIOUS DINING EXPERIENCE. THIS INSTITUTION IS AN EQUAL OPPORTUNITY PROVIDER MENU SUBJECT TO CHANGE



# The Bulldog Grill

## Weekly Menu



**2ND CHANCE DAILY**

EACH MEAL FEATURES A VARIETY OF FRUITS & VEGETABLES TO COMPLETE EVERY MEAL. ENJOY DAILY OFFERINGS OF REDUCED FAT AND LOWFAT MILK.

Monday	Tuesday	Wednesday	Thursday	Friday
<b>1st WEEK</b> FRENCH TOAST BAR	MADE TO ORDER OMELET BAR	WAFFLE SAND	BREAKFAST BURRITO BAR	EGG, POTATO, & MEAT BAR
	MADE TO ORDER OMELET BAR	CREPE BAR	BREAKFAST BURRITO BAR	BREAKFAST SAND

**THIS INSTITUTION IS AN EQUAL OPPORTUNITY PROVIDER**

**MENU'S SUBJECT TO CHANGE**