

March

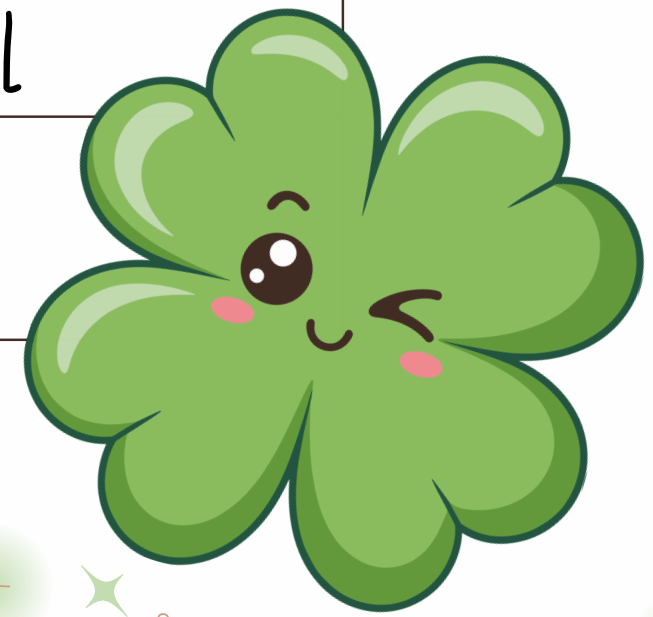
KIMBERLY ELEMENTARY,
STRICKER ELEMENTARY,
KIMBERLY MIDDLE SCHOOL, &
RISE CHARTER SCHOOL

2026



Mon	Tue	Wed	Thu	Fri
HAMBURGER ² POTATO PLANKS	CHEESE QUESADILLA ⁵ FIESTA BEANS	MAC N CHEESE ⁴ BOULS	PB&J SAND ⁵ CHEESESTICK	<i>Pizza</i> ⁶ COOKIE
CHICKEN SAND ⁹ POTATO PLANKS	WALKING TACO ¹⁰ REFRIED BEANS	STROMBOLI ¹¹ Marinara cup	CHICKEN NUGGETS ¹² POTATO & GRAVY GREEN BEANS	<i>Pizza</i> ¹⁵ COOKIE
SLOPPY JOE ¹⁶ BAKED BEANS	BAKED POTATO ¹⁷ CHILI CORN BREAD	SPAGHETTI & ¹⁸ MEATBALLS GARLIC BREAD GREEN BEANS	CHICKEN DRUMSTICK ¹⁹ ½ BAKED POTATO GREEN BEANS BISCUIT	<i>Pizza</i> ²⁰ COOKIE
NO ²⁵ SCHOOL	NO ²⁴ SCHOOL	NO ²⁵ SCHOOL	NO ²⁶ SCHOOL	NO ²⁷ SCHOOL
PB&J SAND ⁵⁰ CHEESESTICK	CHICKEN NUGGETS ⁵¹ POTATO WEDGE GREEN BEANS			

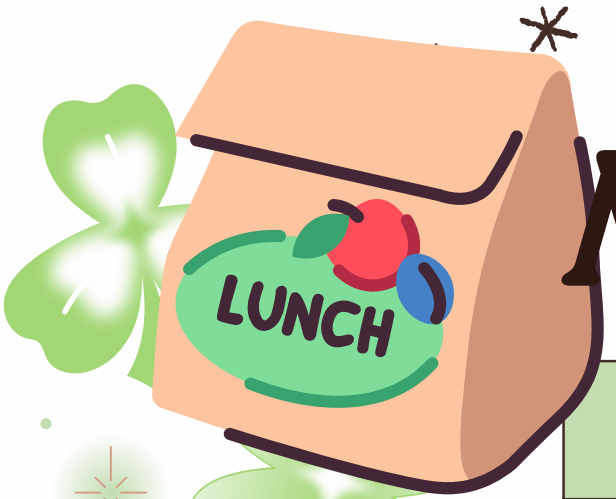
FRIDAY'S
MIDDLE
SCHOOL ONLY
MAIN LINE
6-CORN DOG
14- CHICKEN
STRIP
21- CHICKEN
SAND



ALTERNATE OPTION:
EXPRESS LUNCH
Mon-Fri
Grades 6-8
3 LINES TO CHOOSE FROM

A variety of Skim, Fat-Free & 1% Milk
offered daily

MENU'S SUBJECT TO CHANGE



March

KIMBERLY HIGH SCHOOL

2026



Mon	Tue	Wed	Thu	Fri
PASTA BAR 2	CHIPOTLE STYLE BAR 5	ASIAN BAR 4	<i>FRESH</i> THE EXPRESS SUB 5	CHICKEN STRIP BASKET 6
RAMEN BAR 9	KICKEN' STREET TACO 10	WINGIN' WEDNESDAY 11	<i>Local</i> BAKED POTATO BAR 12	FINGER STEAK BASKET 15
PASTA BAR 16	CHIPOTLE STYLE BAR 17	ASIAN BAR 18	<i>FRESH</i> THE EXPRESS SUB 19	CHICKEN STRIP BASKET 20
NO SCHOOL 25	NO SCHOOL 24	NO SCHOOL 25	NO SCHOOL 26	NO SCHOOL 27
RAMEN BAR 50	CHIPOTLE STYLE BAR 51	<i>GRAB & GO!</i>	DAILY Chicken Sand, Spicy Chicken Sand, Hamburgers, Cheeseburgers, Pizza 2 CHOICES DAILY	



Customized Bars

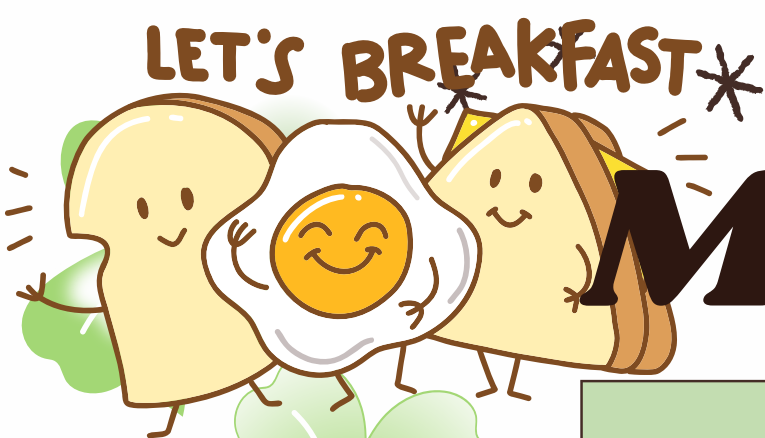
And

**ALTERNATE
DAILY OPTIONS
MON-FRI**

**A variety of Skim, Fat-Free & 1% Milk
offered daily**

*** MENU'S SUBJECT TO CHANGE ***

USDA IS AN EQUAL OPPORTUNITY PROVIDER, EMPLOYER, AND LENDER



LET'S BREAKFAST*

March

KIMBERLY ELEMENTARY,
STRICKER ELEMENTARY,
KIMBERLY MIDDLE SCHOOL, &
RISE CHARTER SCHOOL

2026



the quest for
school breakfast
NATIONAL SCHOOL BREAKFAST WEEK
MARCH 2-6, 2026

Mon	Tue	Wed	Thu	Fri
POWER UP WITH A CRISP UP 2	LEGENDARY SMOOTHIE QUEST COINS 5	WIZARD WAND 4	DRAGON EGGS WIZARD TOAST 5	EXPLORERS BISCUIT & GRAUY 6
ASSORTED CEREAL CHEESE STICK 9	BREAKFAST BURRITO SALSA 10	BLUEBERRY MUFFIN PARFAIT 11	BREAKFAST SAND 12	FRENCH TOAST SAUSAGE PATTY 15
ASSORTED CEREAL CHEESE STICK 16	MUFFIN TOP CHEESE STICK 17	HOMEMADE PANCAKE SAUSAGE PATTY 18	SMOOTHIE MINI DONUTS 19	BISCUIT & GRAUY 20
NO SCHOOL 25	NO SCHOOL 24	NO SCHOOL 25	NO SCHOOL 26	NO SCHOOL 27
ASSORTED CEREAL CHEESE STICK 30	BREAKFAST BURRITO SALSA 31			

ATTENTION PLEASE

PREPAY
STUDENT ACCOUNTS
Send payment to school
OR
PAY ONLINE

Go to: www.mymealtime.com

FRESH FRUIT OFFERED DAILY

A variety of Skim, Fat-Free & 1% Milk
offered daily

MENU'S SUBJECT TO CHANGE

USDA IS AN EQUAL OPPORTUNITY PROVIDER, EMPLOYER, AND LENDER.





Breakfast

BULLDOG GRILL

HIGH SCHOOL 9TH -12TH GRADE
SY 2025-26

FREE & REDUCED APPLICATIONS NOW BEING
EXCEPTED FOR 2025-26 SCHOOL YEAR.
NEW APPLICATIONS REQUIRED EACH YEAR
MAKE ONLINE
PAYMENTS
Go to: www.mymealtime.com

LOCALLY GROWN & IDAHO SOURCED
FOODS & INGREDIENTS WHEN POSSIBLE
BECAUSE OUR STUDENTS DESERVE THE BEST!

**STUDENTS MUST TAKE 3 COMPONENTS
ONE MUST BE FRUIT OR VEGETABLE**

MEAL PRICES
B-REDUCED \$.30
L- REDUCED \$.40
B-K-5 PAID \$2.35
L-K-5 PAID \$3.45
B- 6-8 PAID \$2.85
L- PAID \$3.85
ADULTS B- \$4.10
L-\$5.60
EXTRA MILK \$1.00

THURSDAY

HOT OPTIONS:
Breakfast Sandwiches,
Breakfast Burritos

COLD OPTIONS:
Yogurt Parfaits,
Assorted Cereal

FRIDAY

HOT OPTIONS:
Breakfast Sandwiches,
Breakfast Burritos

COLD OPTIONS:
Yogurt Parfaits,
Assorted Cereal



COOK'S CHOICE
WEDNESDAY

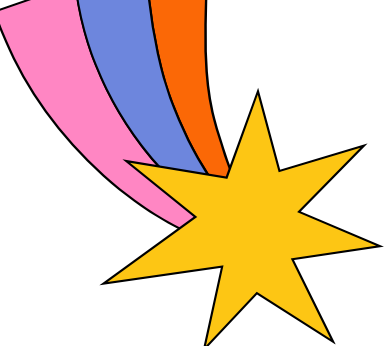
HOT OPTIONS:
Breakfast Sandwiches,
Breakfast Burritos

COLD OPTIONS:
Yogurt Parfaits,
Assorted Cereal

A variety of
Fat-Free &
1% Milk offered daily

EACH MEAL FEATURES A
VARIETY OF FRUITS &
VEGETABLES TO COMPLETE
EVERY MEAL. ENJOY DAILY
OFFERINGS OF REDUCED FAT
AND LOWFAT MILK.

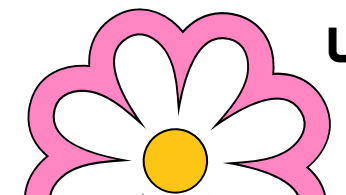
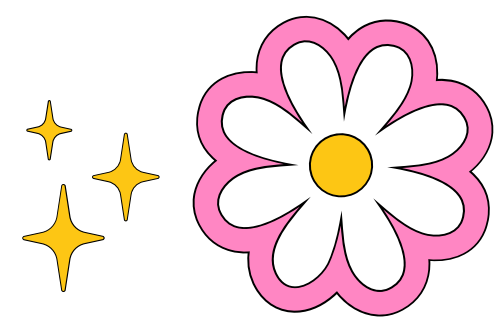
MENU'S SUBJECT TO CHANGE



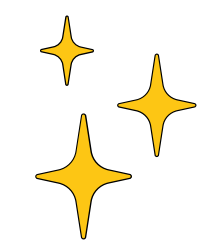
FRESH *Fruits & Vegetables* PROGRAM

MARCH 2026

Mon	Tue	Wed	Thu	Fri
2	3 AMBROSIA APPLE	4 GREEN BEANS	5 VALENTINE PUMMELO	6
9	10 KIWI SUN GOLD	11 ASPARAGUS	12 GRAPES CANDY HEARTS	13
16	17 WHITE NECTARINES	18 TOMATO KUMATO	19 PLUMS YELLOW LEMON	20
23	24 KIKU APPLES	25 SNOW PEA	26 MANDARINS PIXIE	27
30	31 MELONS GALIA			



USDA IS AN EQUAL OPPORTUNITY PROVIDER, EMPLOYER, AND LENDER



MENU'S SUBJECT TO CHANGE

