

Kimberly School District

2025-26 Testing / Curriculum / PD

KSD at a glance

- 1971 students
 - SES: 439
 - KES: 408
 - KMS: 489
 - KHS: 635

~36 additional students compared to 2024-25

Testing & Academics

IRI

ISAT

Academics

Idaho Reading Indicator - IRI

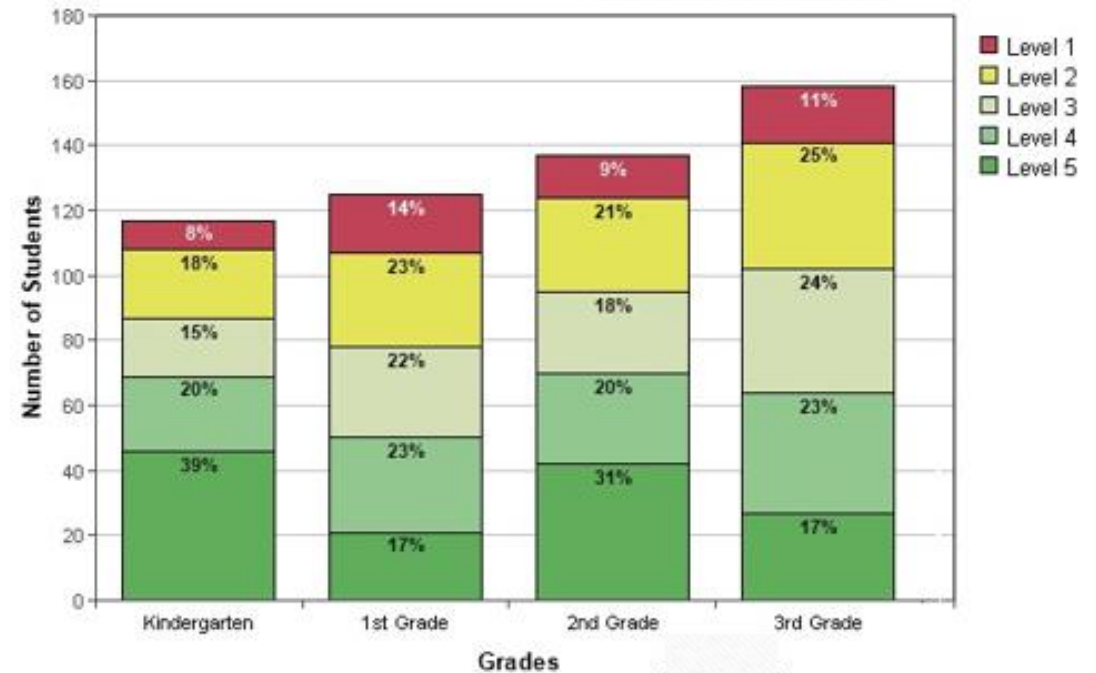
- Each spring and fall, Idaho students in kindergarten through third grade take the IRI as required by Idaho Code 33-1806
- Istation's Indicators of Progress (ISIP™) Early Reading provides progress monitoring by assessing and reporting student ability in the critical domains of reading throughout the year.

Summary

ISIP Early Reading results **Kimberly School District**

School Year 2025/2026

Grades - May 2026



Fall Scores 2025

KSD (K-3): 53.4%

State: 57%

ISAT

- Students test who are in grades 3-8 and 11th Grade
 - ELA - grades 3-8 & 11
 - Math - grades 3-8 & 11
 - Science - grades 5, 8, & 11
- 99% testing completion rate = 4277 tests given

ISAT

Percentage of students at or above proficient

ELA

	KSD	State
3rd	35%	49%
4th	48%	50%
5th	62%	55%
6th	51%	52%
7th	62%	57%
8th	48%	55%
11th	46%	61%

Math

	KSD	State
3rd	51%	51%
4th	52%	48%
5th	51%	42%
6th	46%	43%
7th	46%	44%
8th	26%	41%
11th	22%	33%

Science

	KSD	State
5th	40%	44%
8th	27%	43%
11th	36%	41%

SAT

- KHS tests all 11th graders
 - 52% of Juniors met the Reading & Writing benchmark (68 out of 130)
 - 15% of KHS Juniors met both benchmarks (Math/Reading & Writing)
 - 30% of Juniors from the state met both benchmarks
- KHS tests all 11th graders
 - 31% of Juniors do not take the SAT. 7,500 juniors across the state did not take the SAT

Academics

High School

89% of Grades were C or Above

151 students finished with all
A's (semester 1)
92% of students above 2.0 GPA

Middle School

91% of Grades were C or Above

Testing/ Academic Plan for 2026-27

- Yearly Goal (IPLP) focusing on ISAT improvement
- Interim Blocks
 - Increase the number of interim blocks to provide more practice opportunities
- PD - intentionally selected based
 - IXL – (pilot at HS) online instructional platform supporting practice, skill mastery, and data-driven instruction (assessment & diagnostics)
- KPI
 - Principals continue report on the Key Performance Indicators FY27
- Curriculum & Instruction
 - K-5 Math curriculum works well preparing student for ISATs. Students are required to explain their answers, fostering deeper understanding "over-explaining"
 - Discussion on changes to secondary Math curriculum

Curriculum

Curriculum

License expirations

- Wonders – 2028
- Study Sync - 2028
- HMH Math – 2029
- CPM Math – renew licenses each year

Curriculum Adoption Calendar

- Science 2025
- Computer Science 2026
- ELL & Drivers Ed 2027
- Math 2028

Professional Development

PD - IPLP

- Applied for 6-8 Science teachers to work with Idaho Science Coaches from the Idaho Department of Education.
- PD needs to be intentionally selected based on building priorities, team goals, and individual teacher needs, ensuring alignment with instructional improvement and student outcomes
- Teachers need to accumulate at least 22 hours at a minimum

Guiding Questions

1

What do we want students to **LEARN** ?

What should each student know and be able to do when looking at each standard and measurable learning targets?

2

How will we **KNOW** if they've learned it ?

Development of CFA's, check for understanding, and analyze the data in a timely manner?

3

How will we respond if they **DID NOT** learn it?

What systematic process is in place to provide additional time and support for students who experience difficulty?

4

How will we **EXTEND LEARNING** for those who know it?



The work continues – aligned
efforts for student growth

Kimberly School District