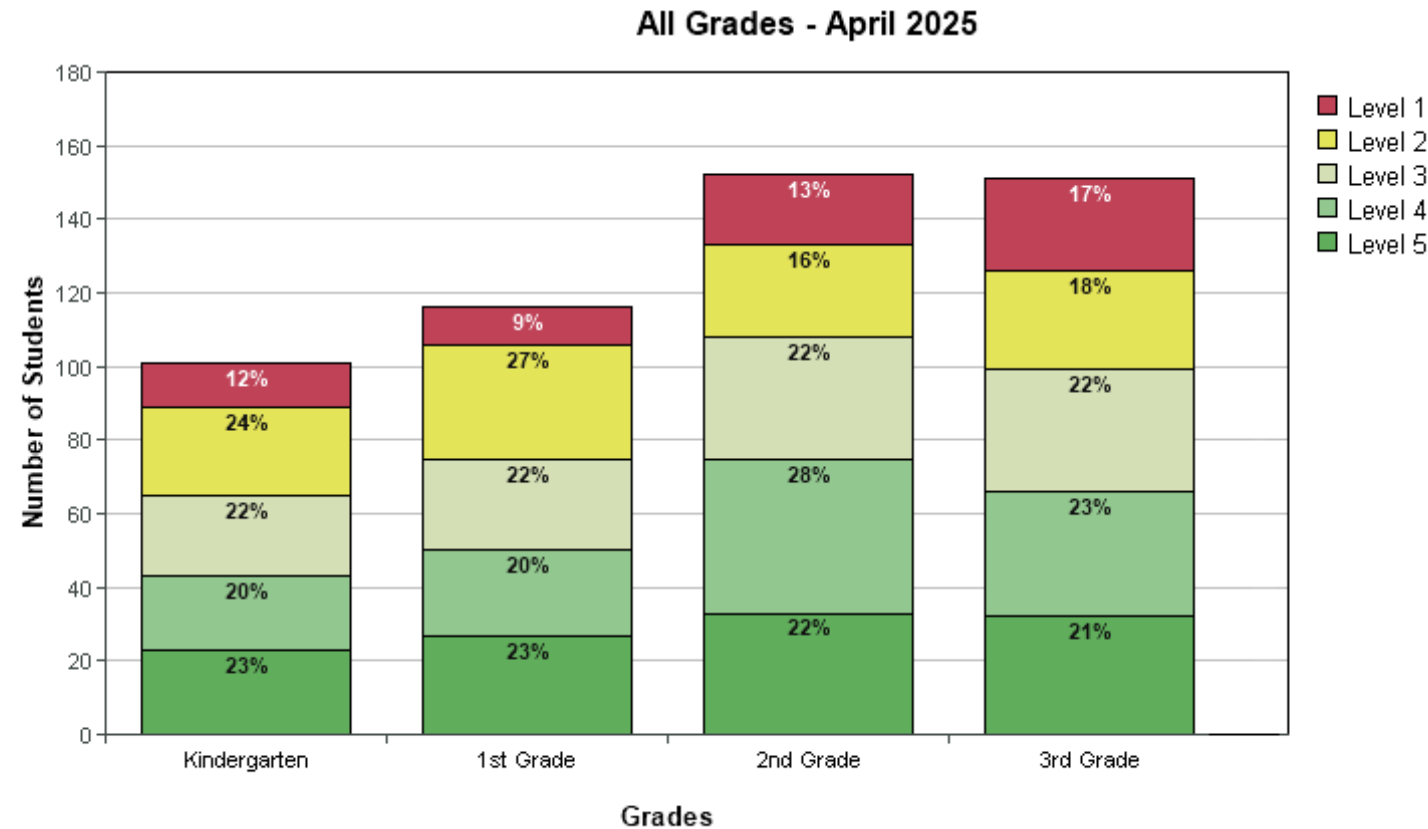


# Summary

## ISIP™ Early Reading results for Kimberly School District 414

School Year 2024/2025



## Positive Trends

- **Kindergarten:**
  - **Level 1 (struggling readers)** decreased from **15% to 12%**.
  - Slight increase in **Level 5 (strongest readers)** from **20% to 23%**.
- **1st Grade:**
  - **Level 1** rose slightly (**6% to 9%**), but **Level 2 and 3** improved: Level 2 grew from **23% to 27%**.
  - **Level 5** remained steady at **23% to 24%**
- **2nd Grade:**
  - **Level 5** readers: **20% to 22%**.
  - **Level 1** improved from **15% down to 13%**
- **3rd Grade:**
  - Increase in **Level 4 and Level 3**: Level 4 rose from **17% to 23%**, Level 3 from **21% to 22%**.

# ISIP™ Early Reading results for Kimberly School District 414

School Year 2024/2025

## All Grades - March 2025

